



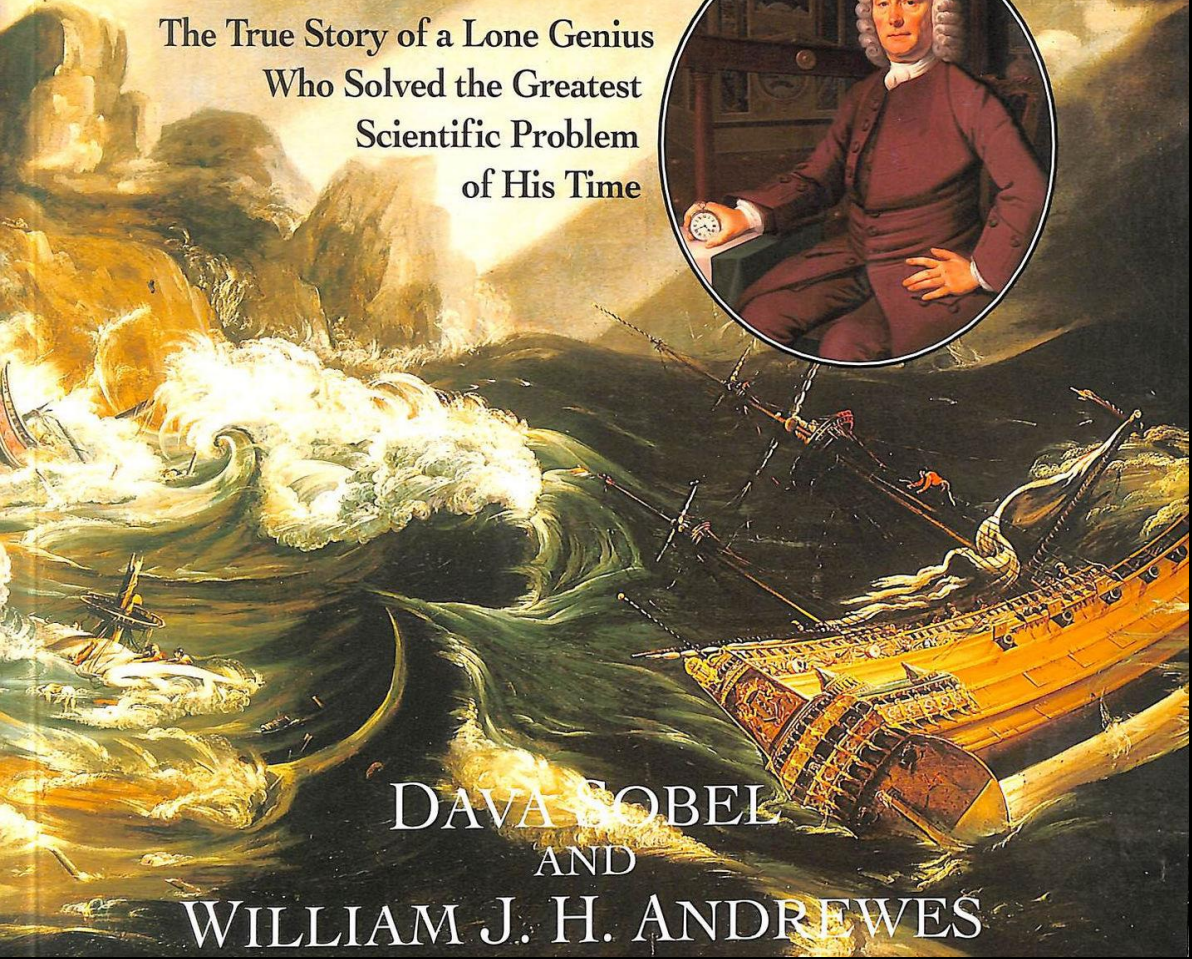
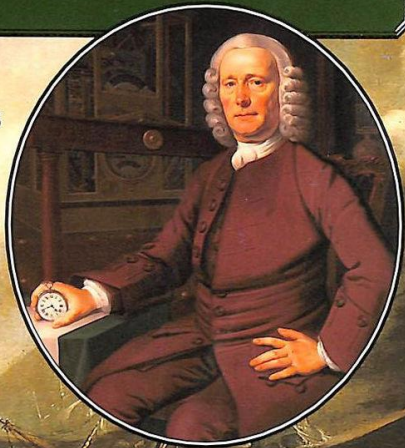
Unlocking Solutions: empowering researchers through challenge-based funding

Dr Ruth Freeman, Director of Science for Society

THE ILLUSTRATED

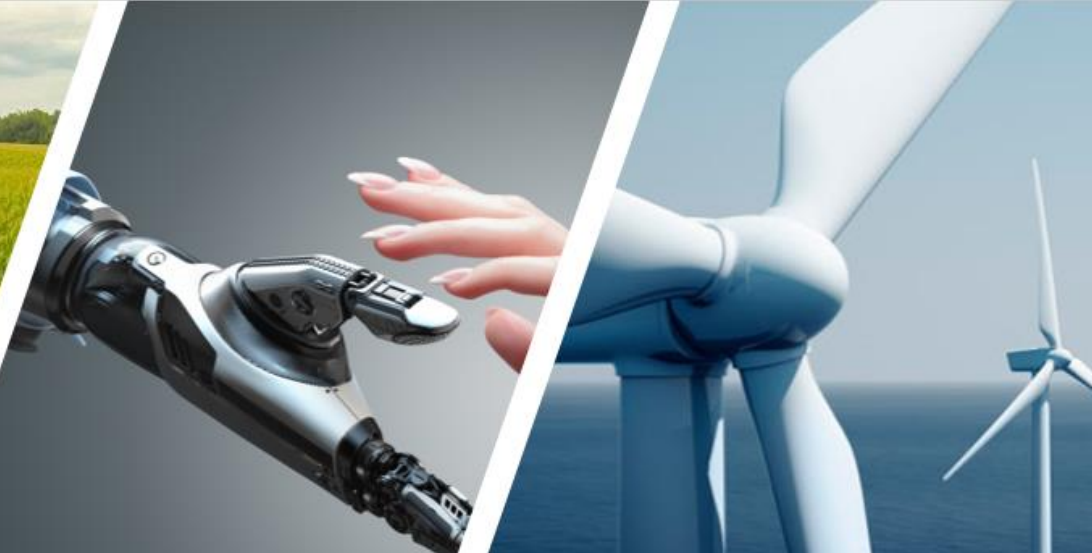
Longitude

The True Story of a Lone Genius
Who Solved the Greatest
Scientific Problem
of His Time



DAVA SOBEL
AND
WILLIAM J. H. ANDREWES

Advanced, agile and highly networked innovation ecosystem



Potential to **drive societal and economic impact** here in Ireland but also give Ireland a unique advantage in addressing challenges that have **global implications**



Challenge funding can **amplify our innovation capabilities** to create sustainable, equitable and innovation-led growth



Ireland – The **world's test-bed** for challenge funding



high-performance interdisciplinary teams
novel, potentially disruptive, technologies
accelerate societal impact
convergence of knowledge
engagement







Farm Zero C

A farming for Sustainable Future

[Learn More](#)



The SDG Challenge

Open for sustainable solutions

8 DECENT WORK AND ECONOMIC GROWTH

9 INDUSTRY, INNOVATION AND INFRASTRUCTURE

10 REDUCED INEQUALITIES

14 WATER

15 LIFE ON LAND

16 PEACE, JUSTICE



Irish Aid

Rialtas na hÉireann
Government of Ireland



National Challenge Fund
**FUTURE FOOD SYSTEMS
CHALLENGE**



National Challenge Fund
**SUSTAINABLE COMMUNITIES
CHALLENGE**



National Challenge Fund
**DIGITAL FOR RESILIENCE
CHALLENGE**



National Challenge Fund
**ENERGY INNOVATION
CHALLENGE**



National Challenge Fund
**HEALTHY ENVIRONMENT FOR ALL
CHALLENGE**



National Challenge Fund
OUR TECH CHALLENGE

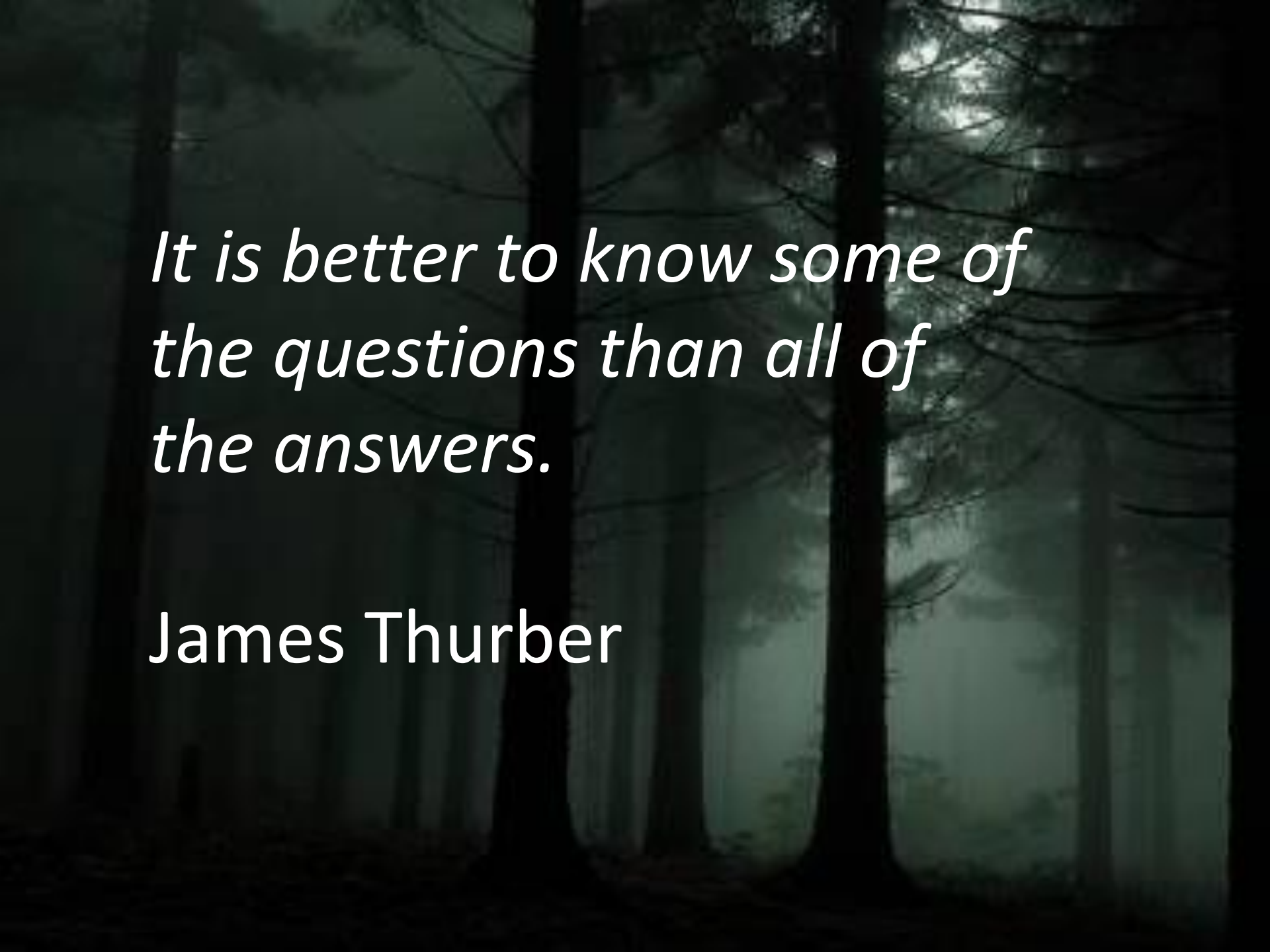


National Challenge Fund
2050 CHALLENGE



National Challenge Fund
FUTURE DIGITAL CHALLENGE





*It is better to know some of
the questions than all of
the answers.*

James Thurber



Thank you

Ruth.freeman@sfi.ie

@abigailruthf

<https://www.linkedin.com/in/abigail-ruth-freeman-61672220/>